



FRONT

EXISTING 1ST FLOOR - 7223 SF
EXISTING 2ND FLOOR - 7223 SF
EXISTING 3RD FLOOR - 7223 SF
TOTAL 21,699 SF



SIDE

SCALE
RUPERT ELEMENTARY SCHOOL, MAIN BUILDING- RUPERT, WEST VIRGINIA

SHEET 100

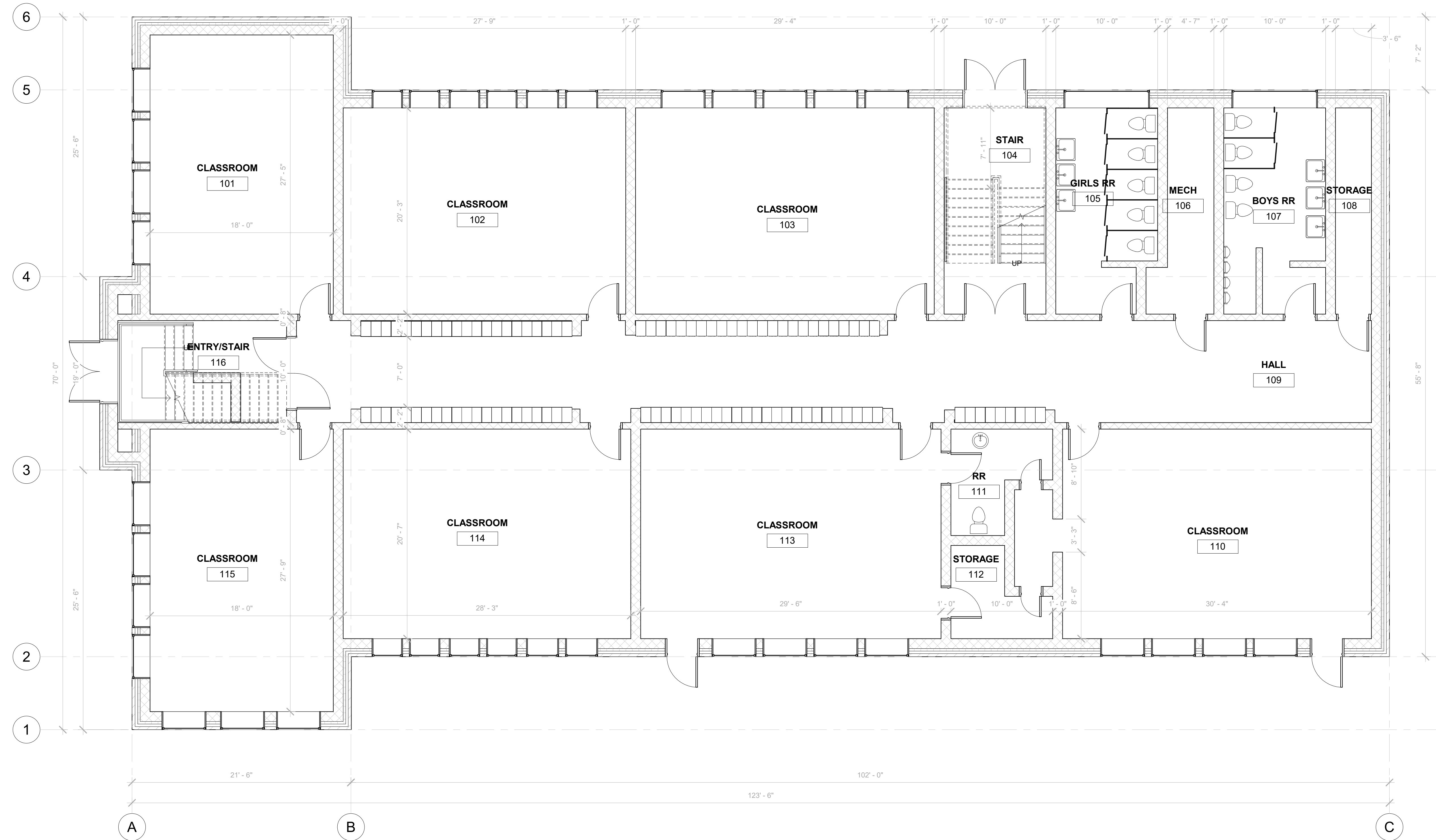
FACILITY EXISTING CONDITIONS & USE ASSESSMENT
MEADOW RIVER VALLEY ASSOCIATION
732 MAIN STREET, SUITE 1
RAINELLE, WV 25962



CC DESIGN
5007 GRASSY MEADOWS ROAD, DAWSON, WV
189 CZAR ROAD, ELLWOOD CITY, PA

03.30.18

COVERSHEET



1 LEVEL 1
3/16" = 1'-0"

SCALE 3/16" = 1'-0"

RUPERT ELEMENTARY SCHOOL, MAIN BUILDING- RUPERT, WEST VIRGINIA

SHEET 101

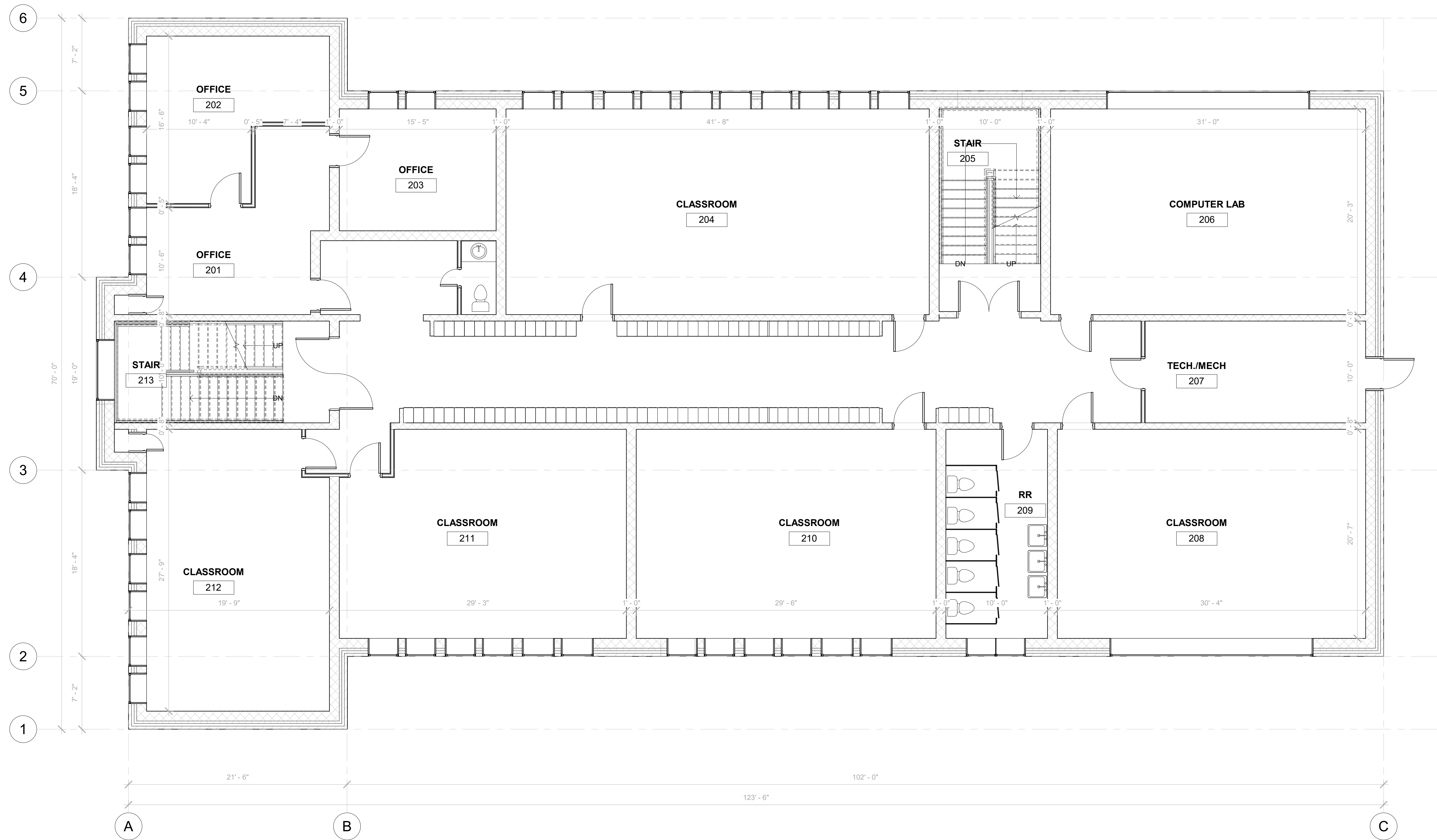
FACILITY EXISTING CONDITIONS & USE ASSESSMENT
MEADOW RIVER VALLEY ASSOCIATION
732 MAIN STREET, SUITE 1
RAINELLE, WV 25962



CC DESIGN
5007 GRASSY MEADOWS ROAD, DAWSON, WV
189 CZAR ROAD, ELLWOOD CITY, PA

03.30.18

EXISTING 1ST FLOOR PLAN



1 LEVEL 2
3/16" = 1'-0"

SCALE 3/16" = 1'-0"

RUPERT ELEMENTARY SCHOOL, MAIN BUILDING- RUPERT, WEST VIRGINIA

SHEET 102

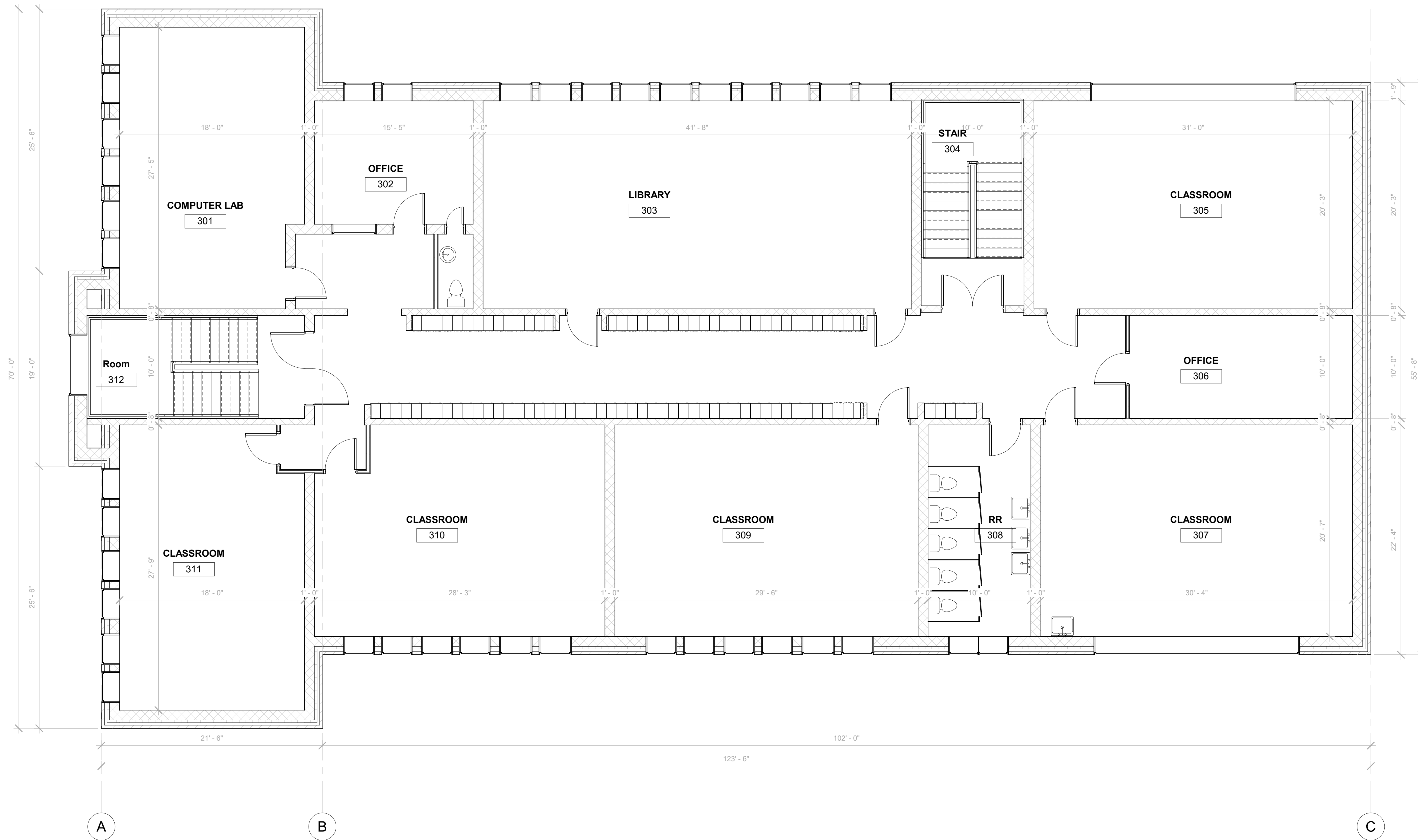
FACILITY EXISTING CONDITIONS & USE ASSESSMENT
MEADOW RIVER VALLEY ASSOCIATION
732 MAIN STREET, SUITE 1
RAINELLE, WV 25962



CC DESIGN
5007 GRASSY MEADOWS ROAD, DAWSON, WV
189 CZAR ROAD, ELLWOOD CITY, PA

EXISTING 2ND FLOOR PLAN

03.30.18



1 LEVEL 3
3/16" = 1'-0"

SCALE 3/16" = 1'-0"

RUPERT ELEMENTARY SCHOOL, MAIN BUILDING- RUPERT, WEST VIRGINIA

SHEET 103

FACILITY EXISTING CONDITIONS & USE ASSESSMENT
MEADOW RIVER VALLEY ASSOCIATION
732 MAIN STREET, SUITE 1
RAINELLE, WV 25962



CC DESIGN
5007 GRASSY MEADOWS ROAD, DAWSON, WV
189 CZAR ROAD, ELLWOOD CITY, PA

EXISTING 3RD FLOOR PLAN

03.30.18